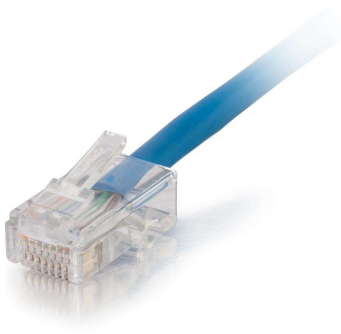




C2G

**100ft (30.5m) Cat5e Non-Booted UTP Unshielded Ethernet Network Patch Cable - Plenum CMP-Rated (TAA Compliant) - Blue**  
Part No. CG-15250



Strict building code requirements for cabling in plenum spaces have created installation challenges in settings such as schools, hospitals and other commercial buildings. C2G has expanded its connectivity portfolio to include a line of cables that are ideal for routing through plenum space above dropped ceilings or under raised floors.

Applications include voice/data/video distribution; this cable will handle bandwidth-intensive applications. Meets all Cat5E TIA/EIA standards, and reduces both impedance and structural return loss (SRL) .

Constructed from high quality plenum cable, this design minimizes Near-End Crosstalk (NEXT) levels. Available in Gray, Blue and Black to easily color-code your network installation.

## Features & Benefits

Rated for Plenum, in-wall installations

Cat5e cable with standard RJ45 connectors

Available in lengths up to 100ft

## Specifications

### General Info

Product Line	C2G	Color	Blue
UPC Number	757120152507	Country Of Origin	United States
Application Sector	Commercial, Industrial, Residential	Warranty Type	Lifetime
Type	Cable		

### Dimensions

Product Length US	100.0 FT	Cable Length	100 ft
-------------------	----------	--------------	--------

### Buy American Act Compliance

TAA Compliant	Yes
---------------	-----

### Technical Information

Jacket Material	PVC (Polyvinyl Chloride)	Jacket Application	Plenum Rated
Cable Type	Ethernet Patch Cable, Unbooted, Unshielded (UTP)	Jacket Rating	CMP Rated, FT6 Rated
Adapter Rear	RJ-45 Male	Adapter Front	RJ-45 Male