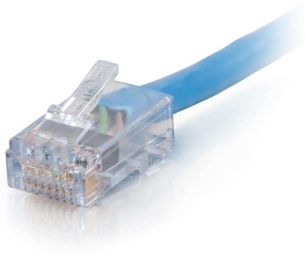




**C2G**  
**100ft (30.5m) Cat6 Non-Booted UTP Unshielded Ethernet Network Patch Cable - Plenum CMP-Rated (TAA Compliant) - Blue**  
Part No. CG-15290



Strict building code requirements for cabling in plenum spaces have created installation challenges in settings such as schools, hospitals and other commercial buildings. C2G has expanded its connectivity portfolio to include a line of cables that are ideal for routing through plenum space above dropped ceilings or under raised floors.

Applications include voice/data/video distribution; this cable will handle bandwidth-intensive applications. Meets all Cat6 TIA/EIA standards, and reduces both impedance and structural return loss (SRL).

Constructed from high quality plenum cable, this design minimizes Near-End Crosstalk (NEXT) levels. Available in Gray, Blue and Black to easily color-code your network installation.

## Features & Benefits

Rated for Plenum, in-wall installations

Cat6 cable with standard RJ45 connectors

Available in lengths up to 100ft

## Specifications

### General Info

Product Line	C2G	Color	Blue
UPC Number	757120152903	Country Of Origin	United States
Features	PoE (Power Over Ethernet)	Application Sector	Commercial, Industrial, Residential
Warranty Type	Lifetime	Type	Cable

### Dimensions

Product Length US	100.0 FT	Cable Length	100 ft
-------------------	----------	--------------	--------

### Buy American Act Compliance

TAA Compliant	Yes
---------------	-----

### Technical Information

Jacket Material	PVC (Polyvinyl Chloride)	Wire Gauge	23 AWG
Jacket Application	Plenum Rated	Cable Type	Ethernet Patch Cable, Unbooted, Unshielded (UTP)
Jacket Rating	CMP Rated, FT6 Rated	Adapter Rear	RJ-45 Male
Adapter Front	RJ-45 Male		