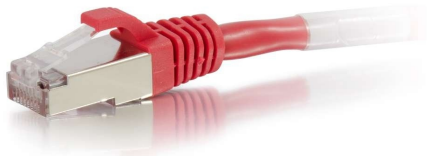




**C2G**  
**100ft (30.5m) Cat5e Snagless Shielded (STP) Ethernet Network Patch Cable - Red**  
Part No. CG-28708

This Cat5e shielded network patch cable is an ideal solution for making a network connecting in a noisy, EMI/RFI, environment. The F/UTP shielding features an overall cable shield which provides protection from EMI/RFI noise and electromagnetic interference. This cable meets or exceeds industry standards for NEXT and return loss. The molded boot provides extra strain relief and durability. Available in a variety of colors to easily color-code your network installation.



Please Note: For maximum protection against EMI/RFI interference, use our Cat5E shielded patch panel (#03864) and Cat5E shielded keystone jacks for complete end-to-end protection.

## Features & Benefits

Designed for network adapters, hubs, switches, routers, HDBaseT applications and more

Supports 1 Gigabit networks up to 328ft for fast data transmission and maximum performance

Meets all Cat5e TIA/EIA requirements for supporting a wide variety of applications

Constructed with shielded twisted pair (STP) wires, designed to protect a high speed network from noise and electromagnetic interference

Snagless connector design for high density environments and protecting the RJ-45 connector's lock

Available in a variety of colors to color-code a network

## Specifications

### General Info

Product Line	C2G	Color	Red
UPC Number	757120287087	Country Of Origin	Vietnam
Application Sector	Commercial, Industrial, Residential	Warranty Type	Lifetime
Type	Cable		

### Dimensions

Product Length US	100.0 FT	Cable Length	100 ft
-------------------	----------	--------------	--------

### Technical Information

Jacket Material	PVC (Polyvinyl Chloride)	Wire Gauge	24 AWG
-----------------	--------------------------	------------	--------

---

Cable Type	Booted, Ethernet Patch Cable, Shielded (STP), Snagless	Jacket Rating	Standard / Non-Rated
Cable Diameter	6 mm	Adapter Rear	RJ-45 Male
Adapter Front	RJ-45 Male		

---